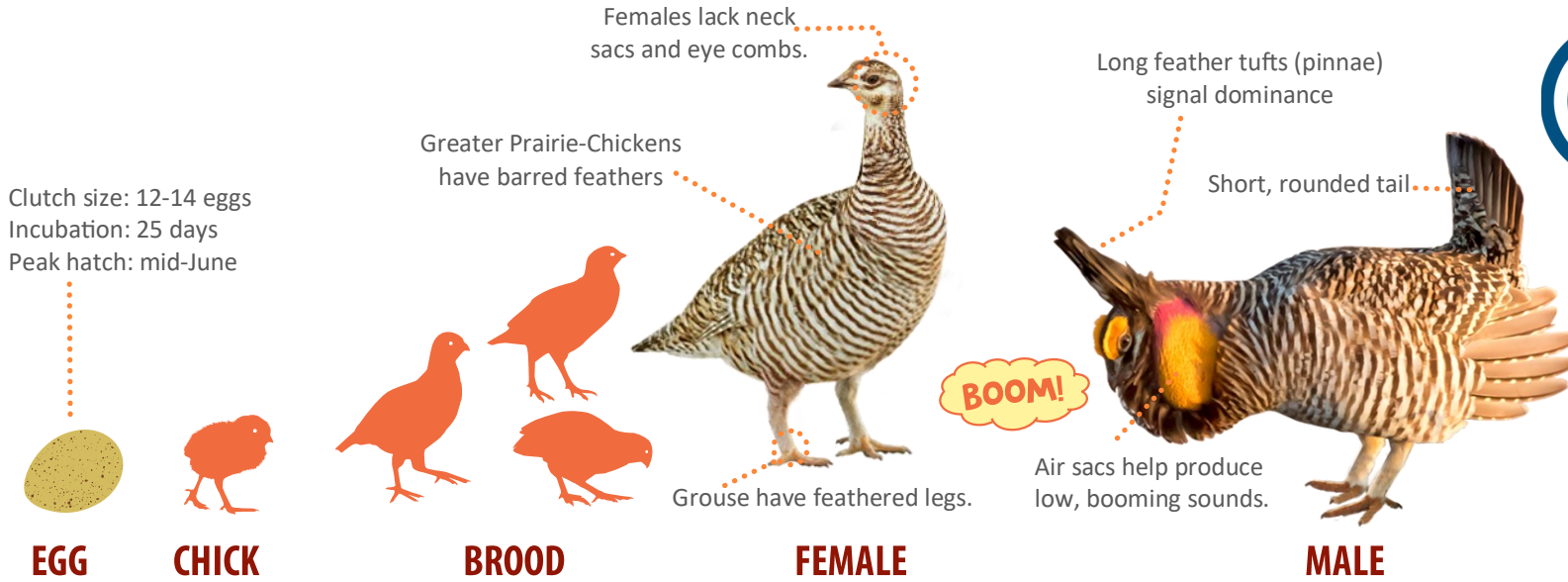
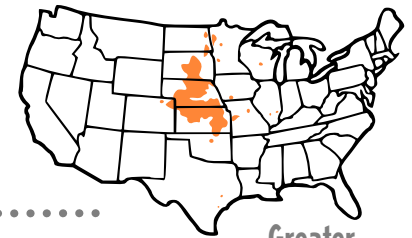


# GREATER PRAIRIE-CHICKEN

(*Tympanuchus cupido*)



In spring, Greater Prairie-Chickens gather at communal leks or booming grounds. Dominant males defend territories at the center of the lek and can be heard booming from over a mile away.



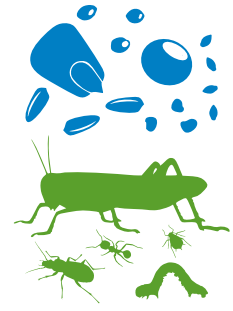
Greater Prairie-chicken distribution



What makes good habitat? Having easy access to food, water, cover, and space to support growth and survival.

## FOOD & FORAGING HABITS

Chicks eat grasshoppers, beetles, and other insects to grow rapidly. As adults, prairie-chickens have a diverse diet, including grains, leafy greens, seeds, fruits, and insects. Seasonal movements to center pivot crop fields occur in winter. Wild foods such as rose hips and acorns are also consumed.



## PRAIRIE-CHICKENS NEED WIDE OPEN SPACES

Large, contiguous tracts of grassland habitat interspersed with cropland supply year-round food and cover. Short grass prairie, hay meadows, and grazed pastures provide highly visible lek habitat. However, hens must have access to taller nesting cover nearby. Additionally, prairie-chickens need cover for brood-rearing and winter survival. Populations have declined due to grassland habitat loss, fragmentation, and tree encroachment. Nebraska and Kansas are prairie-chicken population strongholds.



**9.8** AVERAGE NUMBER OF GREATER PRAIRIE-CHICKEN MALES ON BOOMING GROUNDS.

**20 THOUSAND ACRES** MINIMUM AREA NEEDED TO SUPPORT A GREATER PRAIRIE-CHICKEN POPULATION.

**70%** PERCENTAGE OF GRASSLAND HABITAT LOST IN THE GREAT PLAINS SINCE THE 1800s.

Pheasants Forever is dedicated to the conservation of pheasants, quail and other wildlife through habitat improvements, public awareness, education and land management policies and programs.

For more information visit [pheasantsforever.org](http://pheasantsforever.org)

# TEST YOUR KNOWLEDGE



1.) **True / False:** Prairie-chickens are grassland songbirds.

2.) **True / False:** Colorful feathers distinguish males from females.

3.) **True / False:** Tree encroachment threatens prairie-chicken habitat.

4.) **True / False:** Prairie-chickens belong to the grouse family.

5.) **True / False:** Prairie-chickens are omnivores.

---

---

---

---

---

---

---

---

---

---



GOT HABITAT? Sketch the activity of a Greater Prairie-Chicken lek.