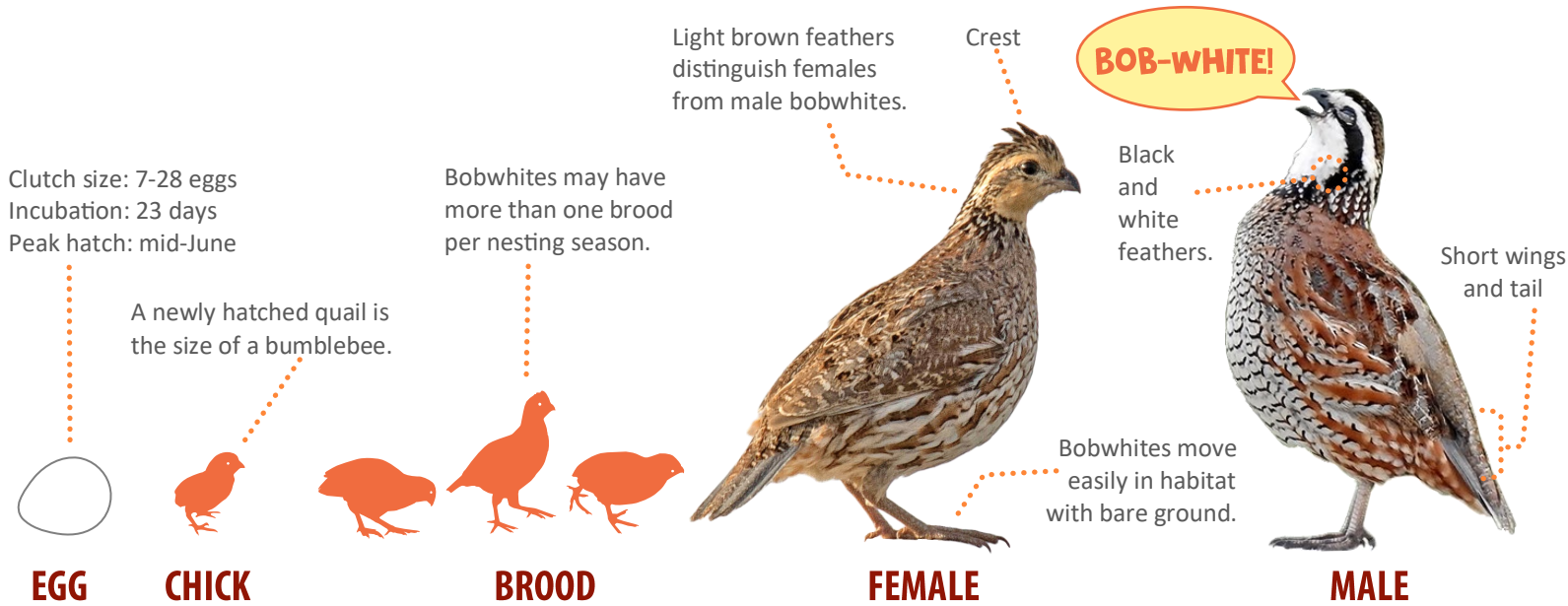
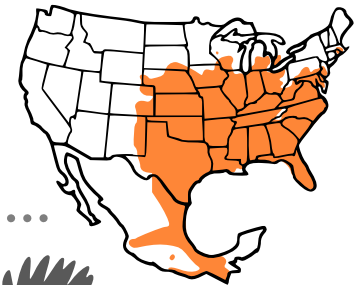


NORTHERN BOBWHITE

(*Colinus virginianus*)



A covey is a group of quail. Circular roost formations provide warmth and many watchful eyes for predators.



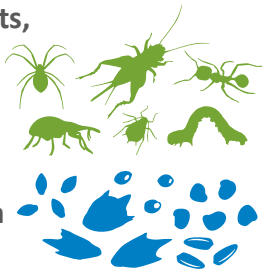
Bobwhite distribution



What makes good habitat? Having easy access to food, water, cover, and space to support growth and survival.

QUAIL FOOD IS IN THE WEEDS

To people, a weed is a plant out of place. Yet, quail view ragweed, pigweed, croton, sunflower, and other weedy plants as desirable food sources. Quail forage on the ground for seeds, insects, berries, and leafy greens. Grains from crop fields are also important, especially during the winter when insects are scarce.



QUAIL HABITAT - LIVING ON THE EDGE

Bobwhites live where two or more habitat types meet (edge habitat) and are never far from woody cover. Picture a plum thicket growing in a grassy fence line at the edge of a crop field. In addition to habitat arrangement, quail also prefer habitats in the early stages of plant succession, with scattered grasses, annual weeds, and bare ground cover. All the habitat needs of a quail are typically found within a home range of 20-40 acres.



1500 SQUARE FEET RECOMMENDED AREA FOR A QUAIL COVEY HEADQUARTERS.

51-66 THE AVERAGE FLIGHT DISTANCE OF A QUAIL MEASURED IN YARDS.

5.1 SECONDS AIRBORNE THE AVERAGE FLIGHT TIME OF A BOBWHITE QUAIL.

Pheasants Forever is dedicated to the conservation of pheasants, quail and other wildlife through habitat improvements, public awareness, education and land management policies and programs.

For more information visit quailforever.org

TEST YOUR KNOWLEDGE



1.) **True / False:** Bobwhite quail can be found in my state.

2.) **True / False:** Both the male and female bobwhite quail have a crest.

3.) **True / False:** Quail live in early successional habitat.

4.) **True / False:** There is no such thing as a “good weed.”

5.) **True / False:** Quail use plum thickets as covey headquarters.



GOT HABITAT? Sketch in the box to help this quail feel more at home.